



200W Solar Panel

USER MANUAL





Table Of Contents

CONTENTS		PAGES
1.	Introduction	3
2.	Safety Precautions & Information	3
3.	Unboxing your solar panel	4
4.	Features & Components	5
5.	Installation & Set up	6-8
1.	PART A – Installation to a RTT	6
2.	PART B – Connecting Power	8
6.	Information & Troubleshooting	9
7.	Warranty & Disclaimers	10

1 INTRODUCTION

Congratulations on your purchase of the Bull Proof 200W Solar Panel! This user manual will help direct you through the correct use of your Solar Panel, including unboxing and safe mounting. All wiring should be completed by a qualified auto-electrician.

2 SAFETY PRECAUTIONS & INFORMATION

Mounting Safety :

- ✓ Use proper brackets or mounting kits designed for rooftop tents to avoid damaging the tent or panel.
- ✓ Ensure the roof load capacity of your vehicle and tent is not exceeded.
- ✓ Always securely fasten the panel to prevent it from shifting or detaching while driving.
- ✓ Avoid placing panels where they interfere with tent deployment or fabric tension.

Electrical Safety & Information :

- ✓ Use proper wiring rated for outdoor/automotive use (UV-resistant, waterproof).
- ✓ All connections should be fused and protected with circuit breakers where necessary.
- ✓ Never work on the system (connect/disconnect) while the panel is exposed to sunlight.
- ✓ Isolate the panel using a solar disconnect or cover it before maintenance.
- ✓ Secure all cables (can use zip ties).
- ✓ Route wires away from the tent folding points.
- ✓ Ensure the panel is clear of any obstructions, shadows etc.

Bull Proof is not responsible for accidents or damage caused by incorrect installation, improper use of equipment, improper maintenance of the product or failure to check vehicle / rack suitability prior to fitting.

3 UNBOXING YOUR SOLAR PANEL

When unboxing your new solar, you should receive the following components :

1



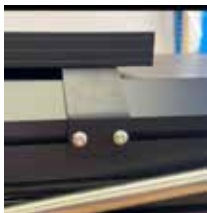
200W Solar Panel

2



3m Long Cables with
MC4 Connectors (already
fixed to the solar panel)

3



Standard Rooftop
Mounting Brackets

Suitable for the GEN 1 & 2
Bull Proof tent, or most
1.3 size RTT's.

Will come included as
standard.

OR

3



Corner Mounting
Brackets

Suitable for the SLV or
XLZ model rooftop tent.

Will come included if
purchased with the SLV
tent **INSTEAD** of the
standard brackets.

Includes VELCRO.



4

FEATURES & COMPONENTS

EXTERIOR:

- A. 200W / 18V
- B. Sleek black anodised aluminium alloy design
- C. 3m Cables with MC4 Compatible Connectors
- D. Mono Crystalline Cells
- E. 3.2mm Tempered Glass
- F. IP65 Waterproof Junction Box
- G. Pre-drilled mounting holes
- H. Includes mounting brackets

5

ASSEMBLY

PART A (Installation to a RTT):

Mounting to a GEN 1/2 Bull Proof Rooftop Tent:

- Always mount your solar panel as close as possible to the hinge end of the tent.
With the solar panel, you will receive a small box that includes the standard rooftop mounting brackets and necessary hardware.
- These brackets follow the exterior shape of the Gen 1/2 Rooftop tents, and will give your solar a nice low profile.

PREPERATION STEPS :

1. Carefully unbox your Solar Panel and prepare your brackets.
2. Keeping your solar facedown on a scratch free surface, peel the plastic off around the aluminium edges. Also cut the zipties off the cables.
3. Identify the 4 x pre drilled hole locations for the brackets.
4. Line the smaller size holes on your bracket, up with the small pre-drilled holes in your solar frame.
5. Secure lightly with the supplied phillips head bolts (washer underneath) and a washer & nylock nut to secure it. 2 bolts per bracket.
6. Attach all 4 x brackets loosely.
7. Check positioning, before tightening the brackets to the frame of the solar panel. Make sure the brackets are each secured straight.

MOUNTING STEPS :

1. Now that your solar panel is prepped with the brackets attached.
2. Slide 4 x square nuts into the top channels on both sides of your tent, and roughly line them up with the placement of your solar brackets.
3. Carefully lift your solar panel onto/over your rooftop tent and line the square nuts up with the holes in your brackets.
4. Use the supplied hex key bolts to screw into the square nut and secure your brackets.

TIP : If you are struggling to line the bolt us with the square nuts inside the channel, use a screw driver to help pull the bracket down/up to assist in lining them up.



1



2



3



Mounting to the SLV Bull Proof Rooftop Tent:

PREPERATION STEPS :

1. Carefully unbox your Solar Panel and prepare your brackets.
2. Keeping your solar facedown on a scratch free surface, peel the plastic off around the aluminium edges. Also cut the zipties off the cables.
3. Apply the dot velcro to the base of the short edges on the solar panel frame.
4. Apply velcro to the 4 x supplied corner brackets and cut off any excess. Apply to the top and side of the bracket. (This will cushion around the solar panel).

MOUNTING STEPS :

1. Carefully lift your solar panel onto your SLV Rooftop Tent Side Rails (with the BULL PROOF cut our logo). Ensuring that both edges are just sitting on the brackets.
2. Grab you corner brackets and place one on each corner of the solar panel.
3. Line the corner brackets up with the holes on your RTT side rails, placing 1 x 20mm M8 Bolt with a washer through the bracket and hole in the rail, and attach a washer and nylock nut underneath loosely.
4. Use at least 1 x bolt per bracket.
5. Once the corner brackets are lined up, and your solar panel is central, you can tighten the bolts.

TIP : Hold the corner brackets straight when tightening and ensure it is well clamped around your solar panel. We recommend tightening one side at a time.

1



2



3



PART B (Connecting Power):

What's Required :

- Deep cycle battery (allows you to store and user your power).
- Solar Regulator / Solar Charge Controller (Protects battery from damage by managing power flow)
- Inverter (Converts direct current (DC) electricity to algtternating current (AC) electricity.
- MC4 to Anderson Plug adaptor cord, (if running your solar to an anderson plug rather than MC4).

It's important to note that anything electrical related should be done / checked by a qualified auto-electrician to ensure that your set up is safe and correctly installed.

Always ensure :

- Correct size cables are used
- Connections and cables are secure and protected from the elements (e.g water)
- Quality electrical components are installed and suit the power input / output.

Bull Proof is not responsible for any electrical fault related to the incorrect installation or set up of electrical components.

Brief Overview :

SOLAR PANEL → REGULATOR → DEEP CYCLE BATTERY → INVERTER

6

INFORMATION & TROUBLESHOOTING

Additional Information:

- Always use a suitable gauge wire.
- Regularly inspect the power cables and connections for signs of wear or damage.
- Always ensure your cables and connections are protected from the elements / weather.
- Always get a qualified auto-electrician to install and check any electrical components in your set up.

Troubleshooting

If you experience issues with the power connection, check the following:

- Ensure all connections are secure and not corroded.
- Verify the vehicle's battery is in good condition and charged.
- Check the power cables for damage.

By following these tips, and guidance from a qualified auto electrician, you'll be able to safely connect your new solar panel into your 12v system. If you're unsure about any aspect of the process, always consult a licensed auto electrician or contact our team for guidance.



WARRANTY & DISCLAIMERS

Full **12 Month** Warranty from date of purchase against all manufacturing defects. This warranty will cover any defects in design or manufacture which results in the product failing to perform as described in authorised advertising or literature. We will either repair or replace the product at our discretion providing that the fault is found to have been caused by a design or manufacturing defect and not misuse or tampering.

This warranty will NOT cover:

- ✔ Normal wear and tear from use, including fading, scratches, and abrasions.
- ✔ Damage caused by misuse, abuse, accidents, alterations, or improper installation.
- ✔ Damage resulting from extreme weather conditions, including wind, hail, or storms.
- ✔ Damage caused by unauthorised repairs or modifications.
- ✔ Any incidental or consequential damages.
- ✔ Variances within manufacturing tolerance.

To make a claim, please ensure you retain your sales receipt of purchase and contact us ASAP:

sales@bullproof.com.au , (03) 9125 7069



WE LOOK FORWARD TO SEEING YOU OUT 'N' ABOUT!